

FACT SHEET 1-2022: ETICS ARE ETICS

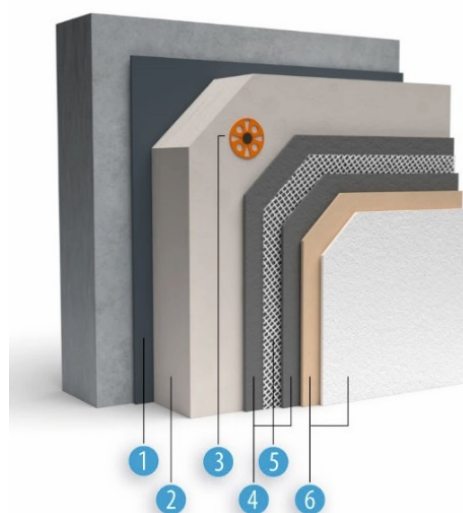
DON'T MIX UP: CONSUMERS TRUST IN LONG-TERM EXPERIENCE

Not every thermal insulation of external walls deserves the name ETICS

- External Thermal Insulation Composite Systems (**ETICS**) have first been installed in the late 1950ies to improve the thermal resistance of external walls.
- ETICS have **proven** their superb **durability and long-term performance** in practice under different climate conditions and applied to an amazing variety of building types.
- Through the years **ETICS** manufactures have developed a huge range of system configurations to **meet all building requirements** and to **serve the design needs** of property owners.
- Today ETICS configurations and **design options** are available on the market to suit **for all purposes**.

All ETICS have these aspects in common:

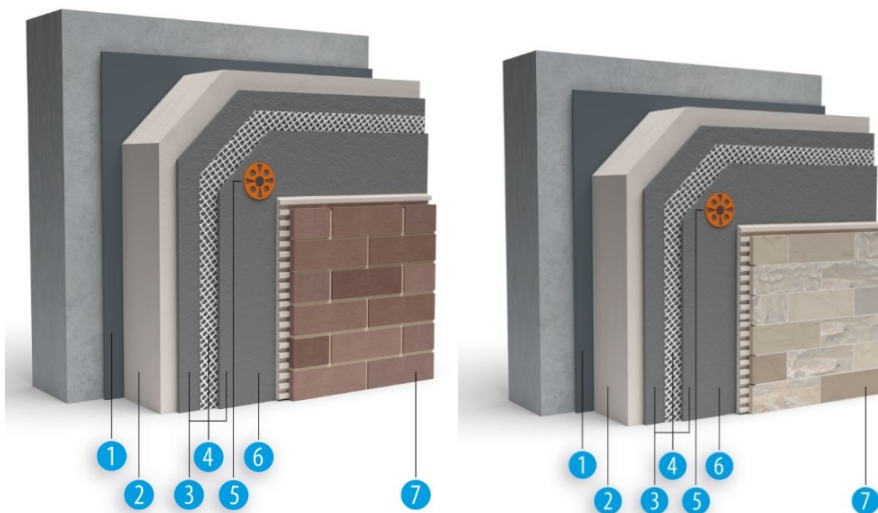
- The **insulation** layer is made from insulation boards (for example EPS, MW, PF, PU) and **provides a significant level of thermal resistance** to keep the heat in the building during winter and to keep it out of the building in summer, whilst **minimizing thermal bridges**.
- A **continuous reinforced base coat** covers the insulation and **protects the insulation** from driving rain.
- **ETICS are assessed as one single product (ETIC kit)**, carefully considering the interaction of system components. Only if all **components are delivered from a single source** and **put together on site** according to the ETICS manufacturer's instructions, manufacturers can guarantee for the declared performance and the long-livety of the systems.



ETICS are predominantly **fixed to solid walls made from concrete or bricks**.

Picture 1: The most popular ETICS with rendering system comprises of at least (1) adhesive, (2) thermal insulation product, (3) mechanical fixing devices (optional), (4) base coat with embedded (5) reinforcement mesh and (6) finishing coat (including prefabricated render slips).

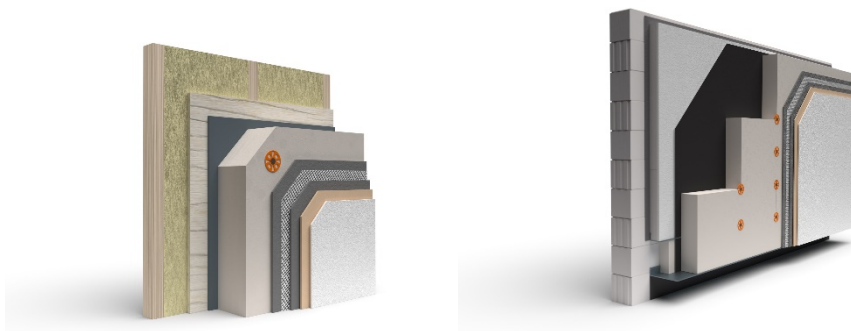
To allow for even more **design options** ETICS are available where the finishing coat is replaced by e. g. solid **brick slips** or **natural stones**.



Pictures 2 and 3: ETICS with brick slips (left) or natural stones (right) as outer layer provide even more amazing design options.

As many facades have already been insulated with ETICS in previous decades with lower energy-performance requirements of buildings, manufacturers developed solutions to further improve the thermal resistance of such facades by simply adding an additional layer of ETICS. If installed properly, existing ETICS are still performing well after decades and do not need to be removed. **ETICS-on-ETICS renovations** are the perfect choice to further **prolong the ETICS service life**.

Specific ETICS types are available to be **applied to timber or metal substrates**. **ETICS** can also be **applied to** existing **cavity walls** provided mechanical stability and hygrothermal aspects are considered.



Pictures 4 and 5: ETICS are also available for application on walls made from solid timber, timber or metal frames (left); thanks to ETICS-on-ETICS application the thermal resistance of already insulated walls can be further improved without removal of existing ETICS.

In some countries, especially in North America, External Insulation Finishing Systems (**EIFS**) are used. These systems are similar to ETICS. They include a drainage layer to comply with specific climate conditions

Respect the boundaries

There are many solutions on the market to improve the thermal resistance of external walls. Each solution creates specific benefits. However, EAE calls for clearly distinguishing between different solutions. The term ETICS needs to be limited to the abovementioned solutions.

- This helps **national authorities** to **distinguish** between different technologies in their national **building codes** and their national **application rules**.
- **Designers** and **architects** can easily **assess** product **performances** against these **requirements**.
- **Customers** benefit from a **transparent market** to take their **individual decisions**.

About EAE

- EAE is the voice of the ETICS industry in Europe.
- EAE members represent more than 80 per cent of Europe's revenue from ETICS.
- EAE has been constantly working towards a "culture of sustainability" in the construction sector since its foundation 2008.

EAE members



Contacts

Registered office

Friedhofstraße 3
76530 Baden-Baden, Germany
Phone: +49 7221 94477-40
www.ea-etics.com
info@ea-etics.com

Brussels office

Bld Reyerslaan 80
1030 Bruxelles/Brussel, Belgium
Phone: +32 2 416 21 74
European Transparency Register: 150628337276-48
Managing Director: Ralf Pasker

25/02/2022_ETICS are ETICS