

THE MAKE-OR-BREAK DECADE: MAKING THE EPBD FIT FOR 2030

16/09/2021

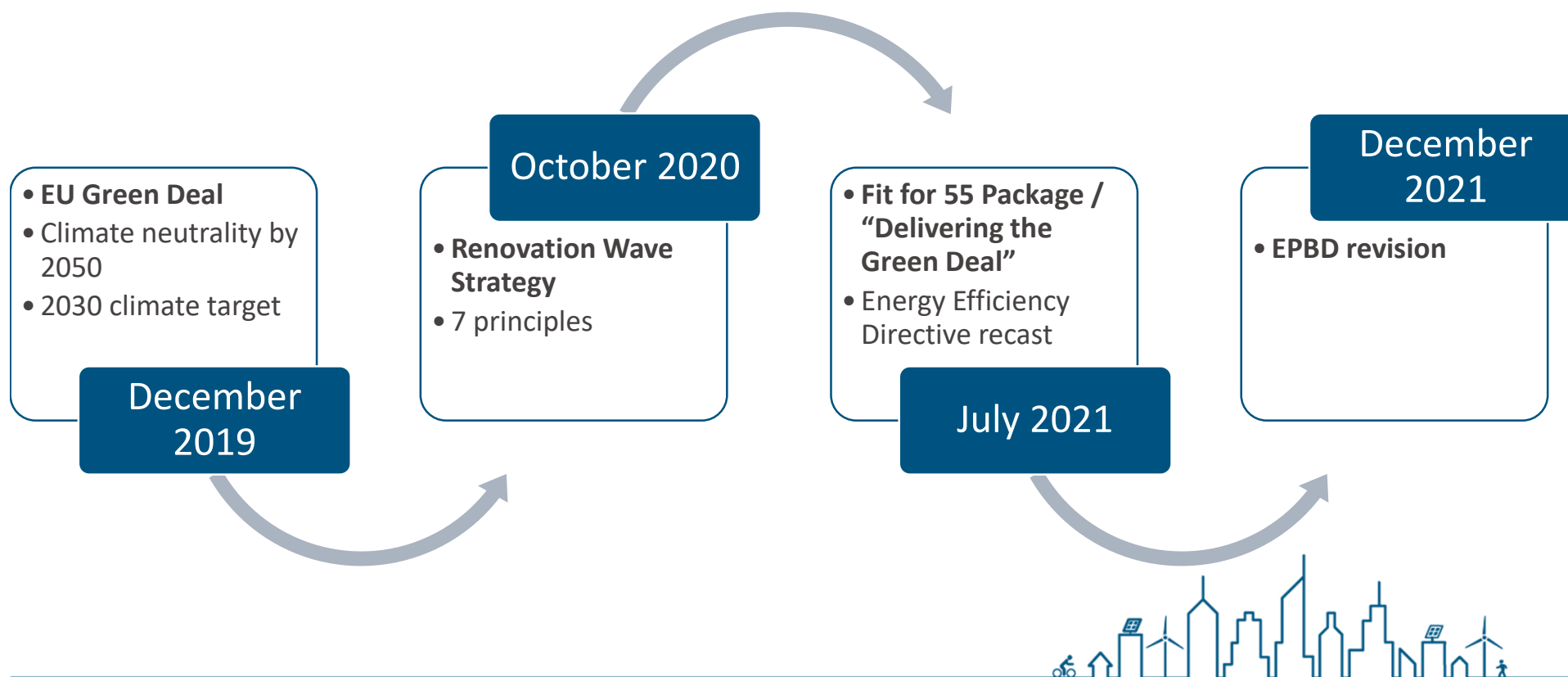
Hélène Sibileau

Online



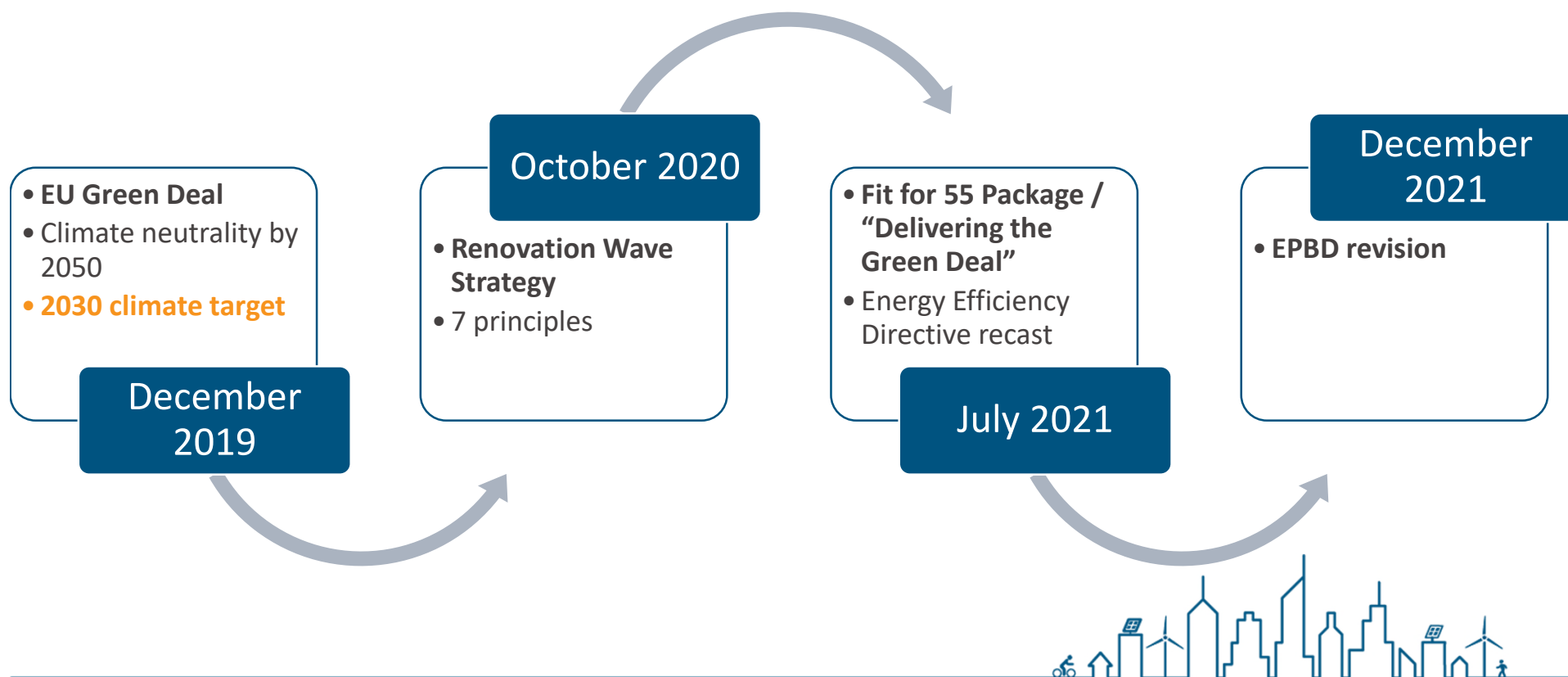


EU POLICY CONTEXT





EU POLICY CONTEXT





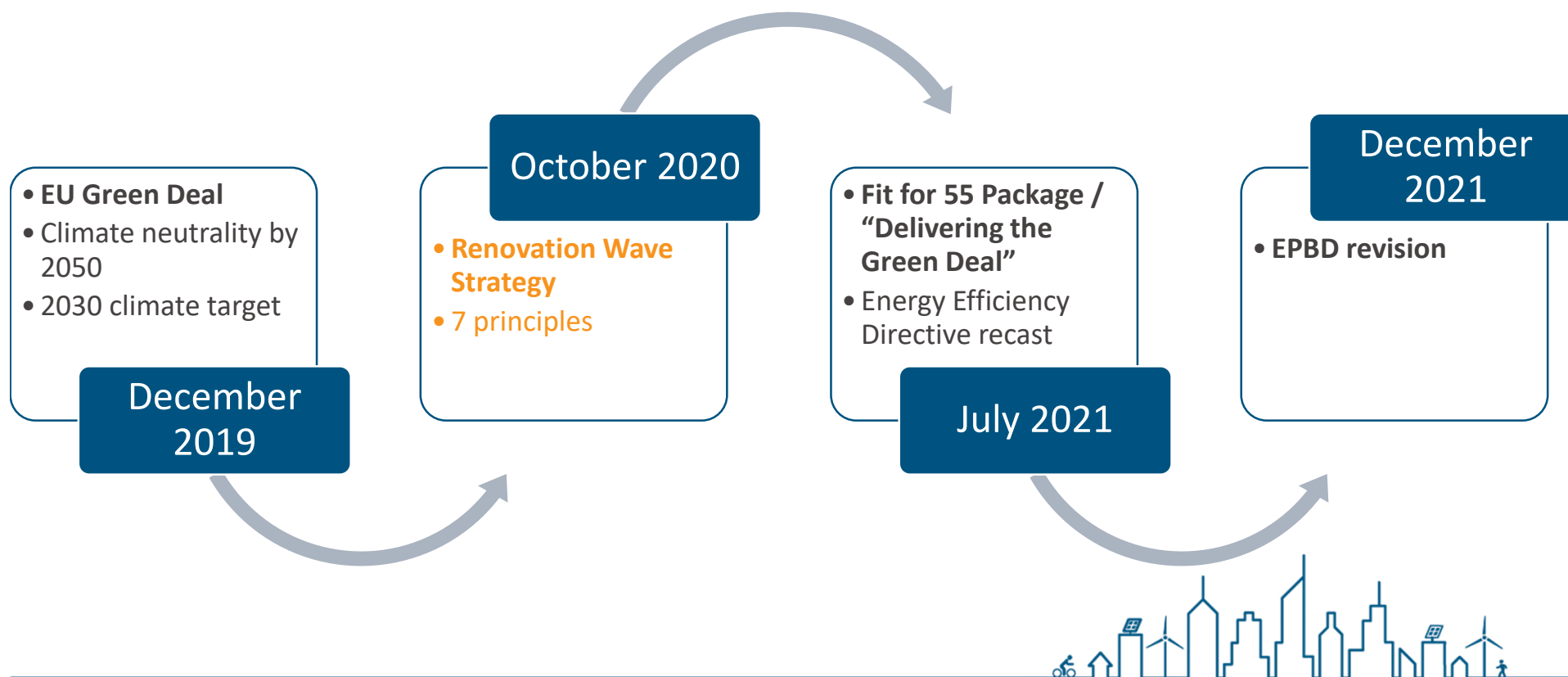
2030 TARGET

- 2030 climate target of at least -55% GHG emissions
→ **what does it mean for the buildings sector?**
- BPIE Study (December 2020)
 - ✓ Reducing GHG emissions by 60% by 2030 compared to 2015
 - ✓ Moving asap from annual deep renovation rate of 0.2% to 3% (*more than doubling as announced in the Renovation Wave Communication*)





EU POLICY CONTEXT





RENOVATION WAVE

Energy Efficiency
First

Affordability

Decarbonisation &
RES integration

Life-cycle thinking
& circularity

High health &
environmental
standards

Green & Digital
transition

Respect for
aesthetics &
architectural quality





RENOVATION WAVE

NEW EUROPEAN BAUHAUS
COMMUNICATION

15 SEPTEMBER 2021

Energy Efficiency

Environmental
standards

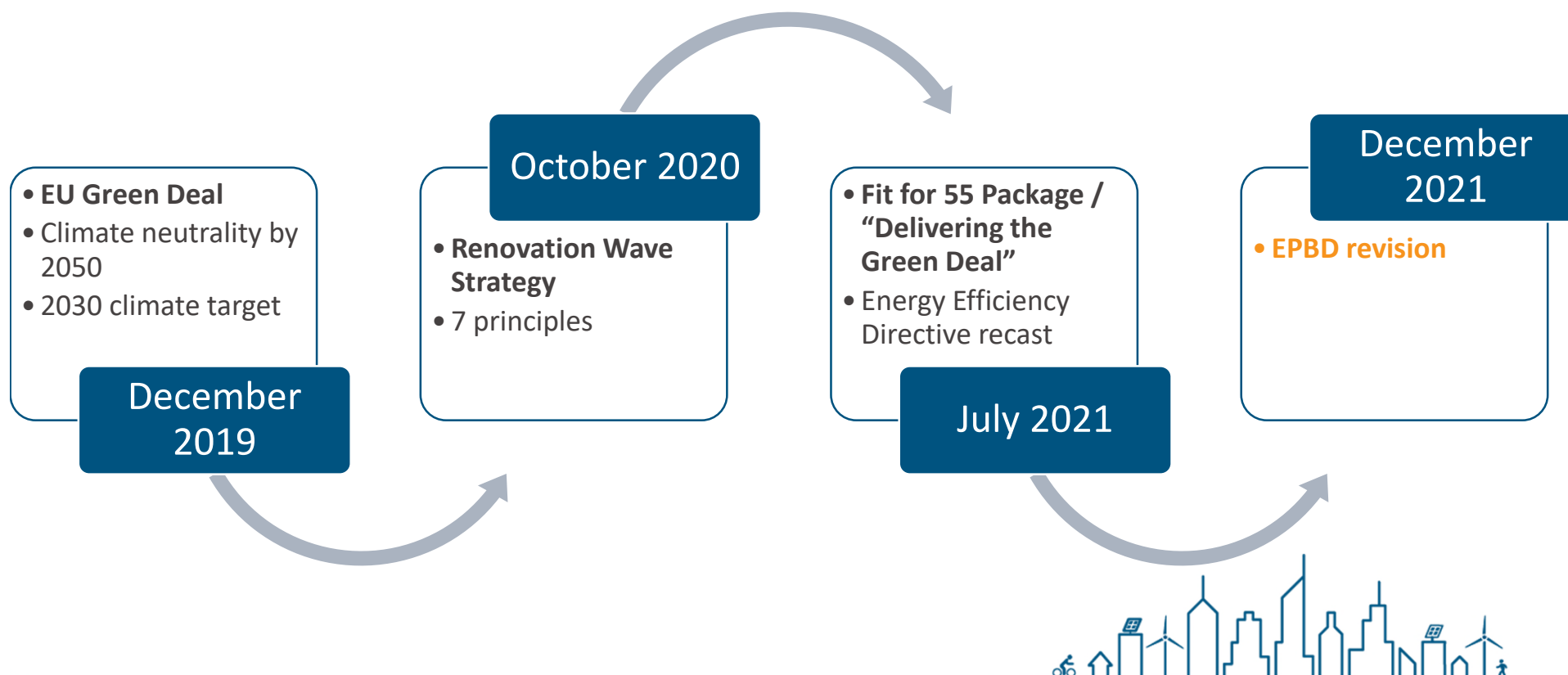
Green & Digital
transition

Respect for
aesthetics &
architectural quality

Life-cycle thinking
& circularity



EU POLICY CONTEXT





THE 2021 EPBD REVISION MAKE-OR-BREAK OPPORTUNITY

Make the EPBD fit for 2030 and beyond

- Ensure the buildings sector will contribute to the achievement of the updated 2030 climate target
- Make the EPBD a milestone towards reaching climate-neutrality by 2050

Address both the climate and social challenges of the sector

- Take social aspects of the European housing situation into account, especially the alleviation of energy poverty, to ensure a just and fair transition

The EPBD revision must be comprehensive





THE 2021 EPBD REVISION POLICY RECOMMENDATIONS - 4 PILLARS

1. Clarified & more ambitious **2050 vision**, integrating WLC

2. **Standards & tools** to achieve climate neutrality for all buildings

3. Ecosystem of **transformative policies** for the whole building stock

4. Buildings for **people**: taking everyone on board the Renovation Wave





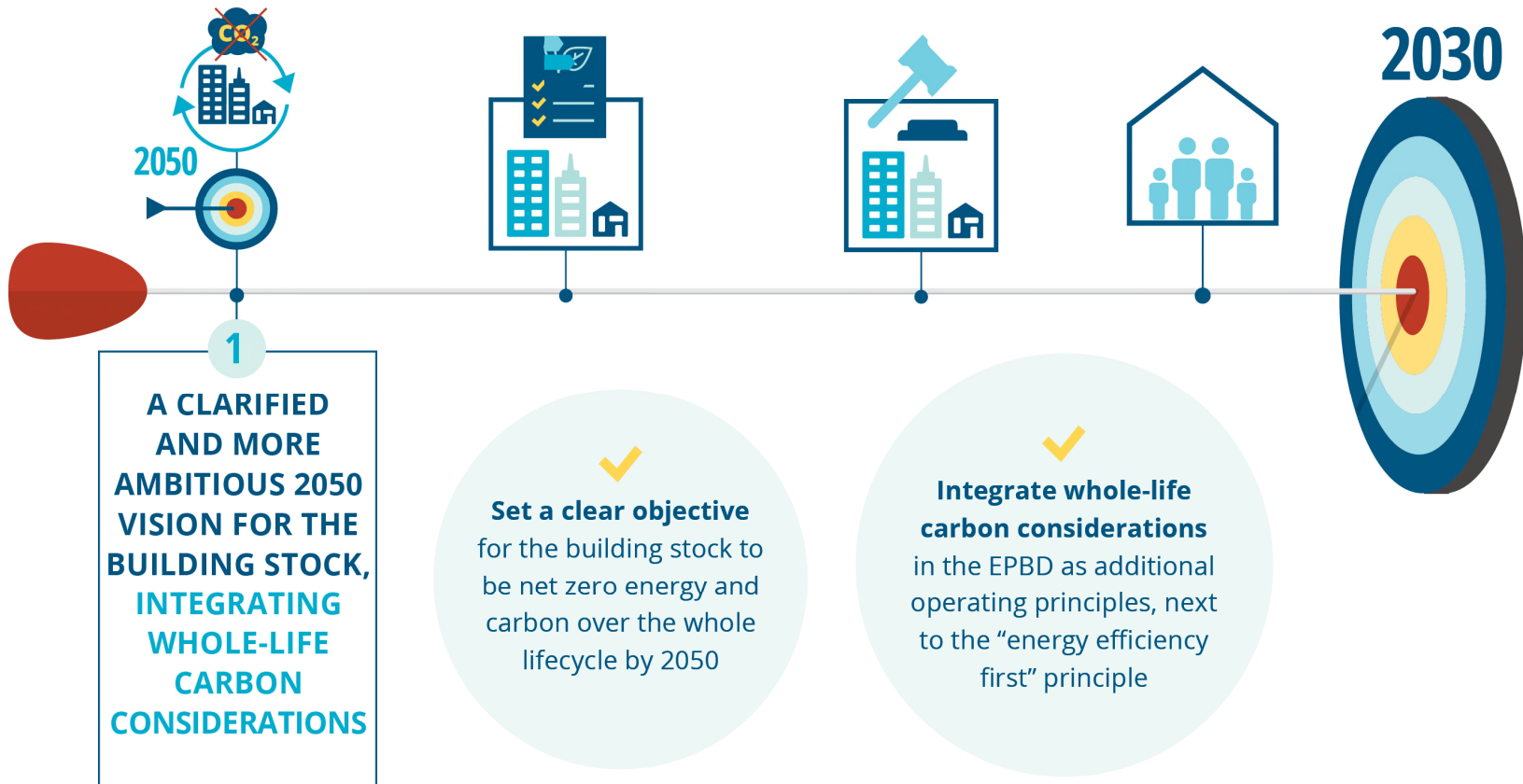
1

**A CLARIFIED
AND MORE
AMBITIOUS 2050
VISION FOR THE
BUILDING STOCK,
INTEGRATING
WHOLE-LIFE
CARBON
CONSIDERATIONS**



2030







2050

1

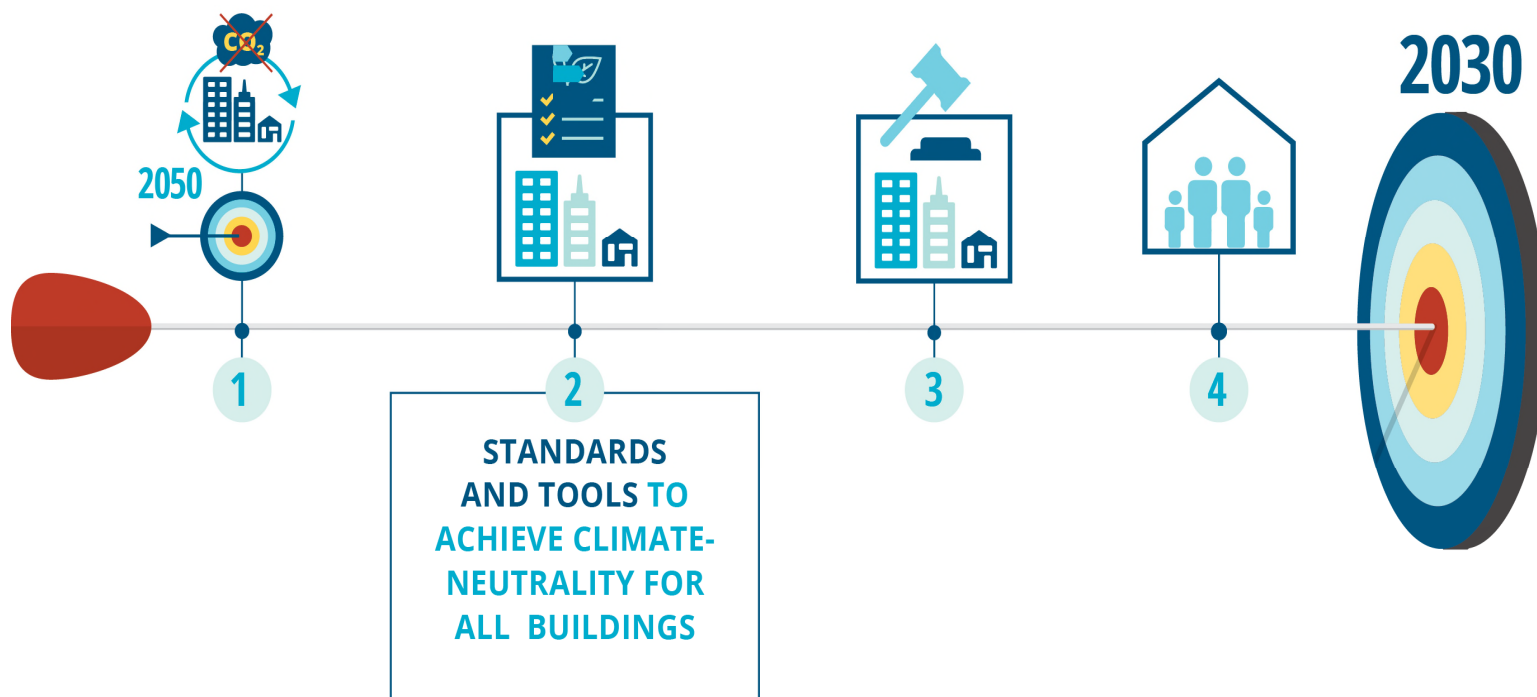
A CLARIFIED
AND MORE
AMBITIOUS 2050
VISION FOR THE
BUILDING STOCK,
INTEGRATING
WHOLE-LIFE
CARBON
CONSIDERATIONS

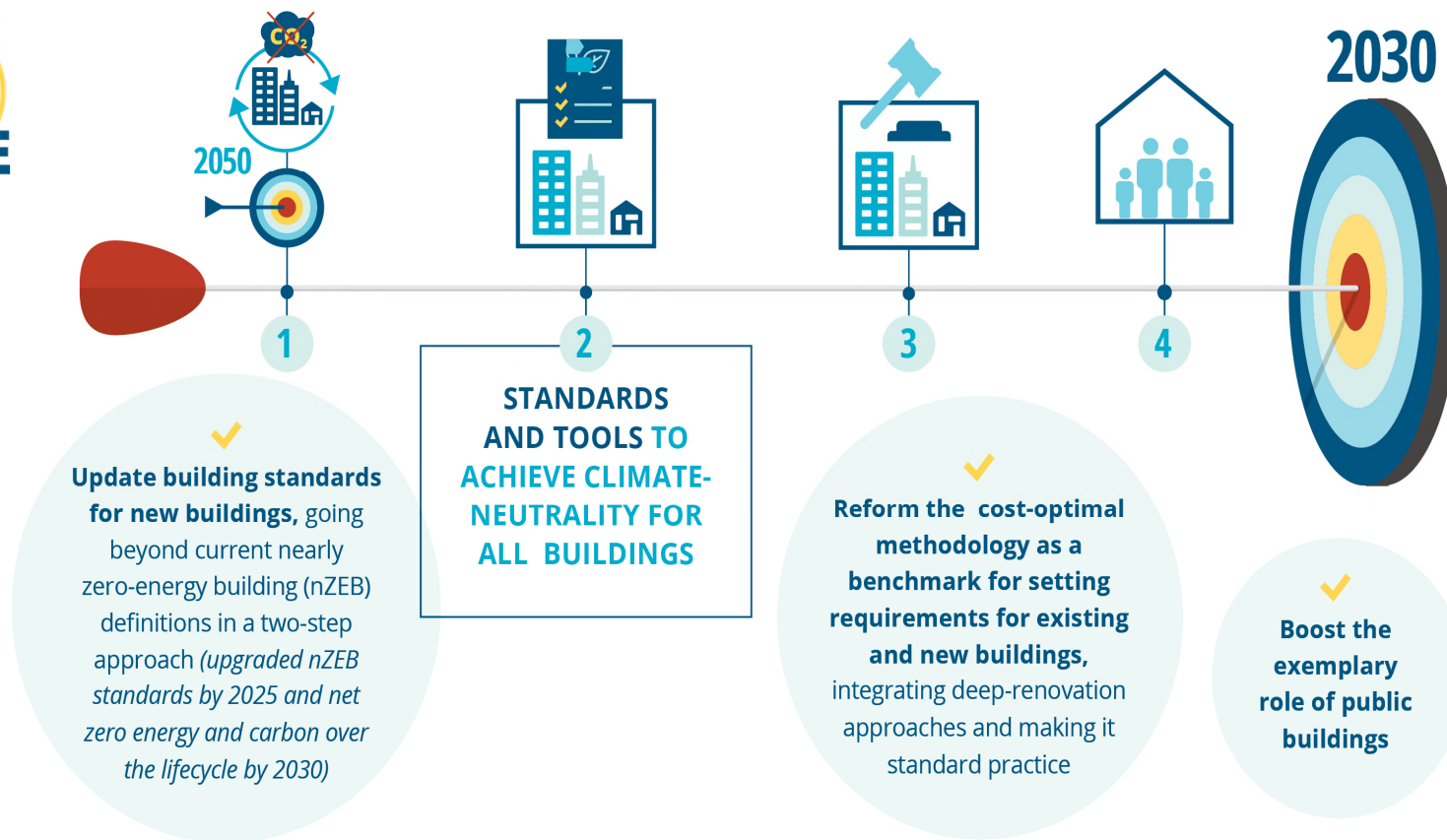


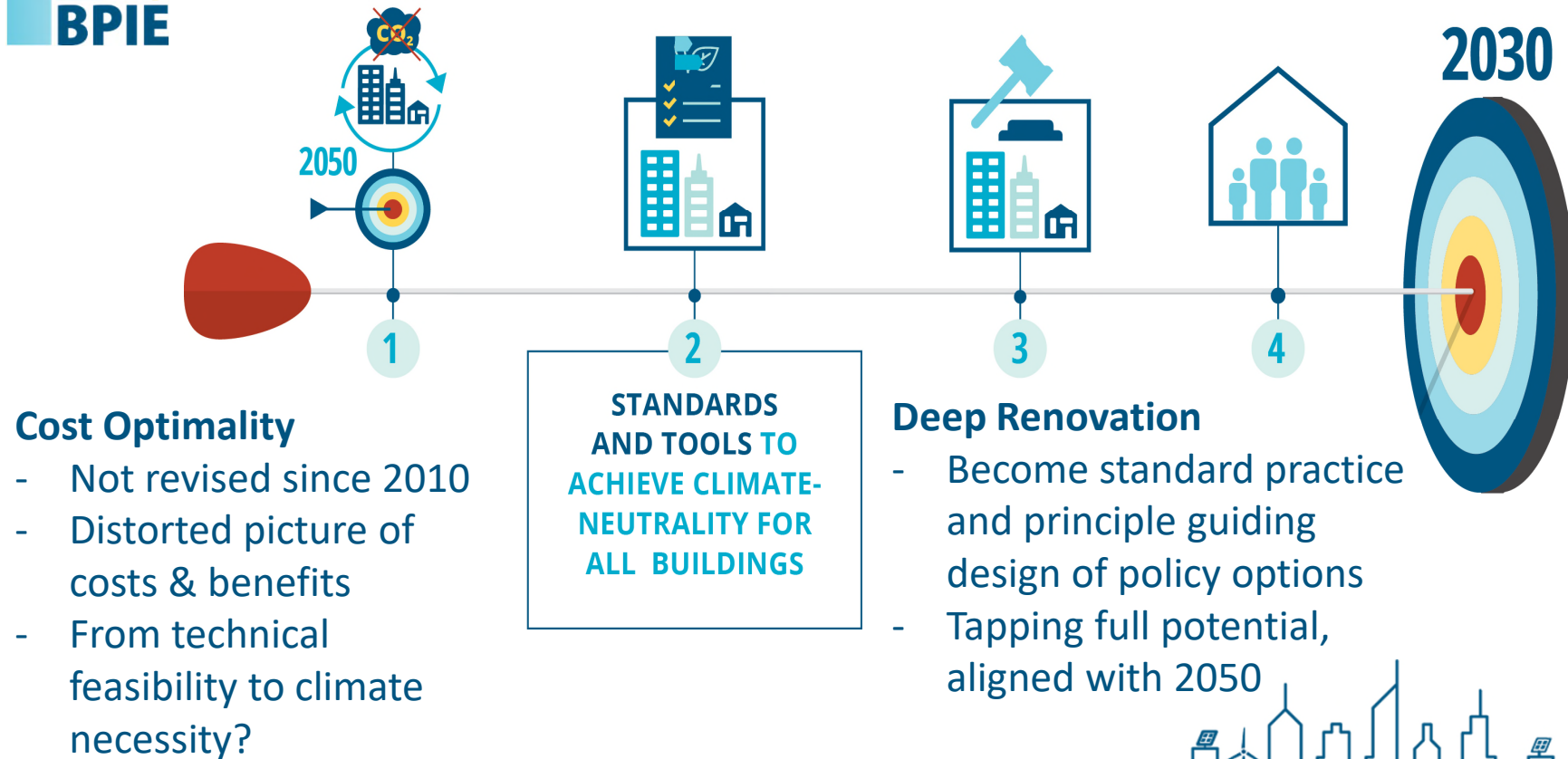
2030

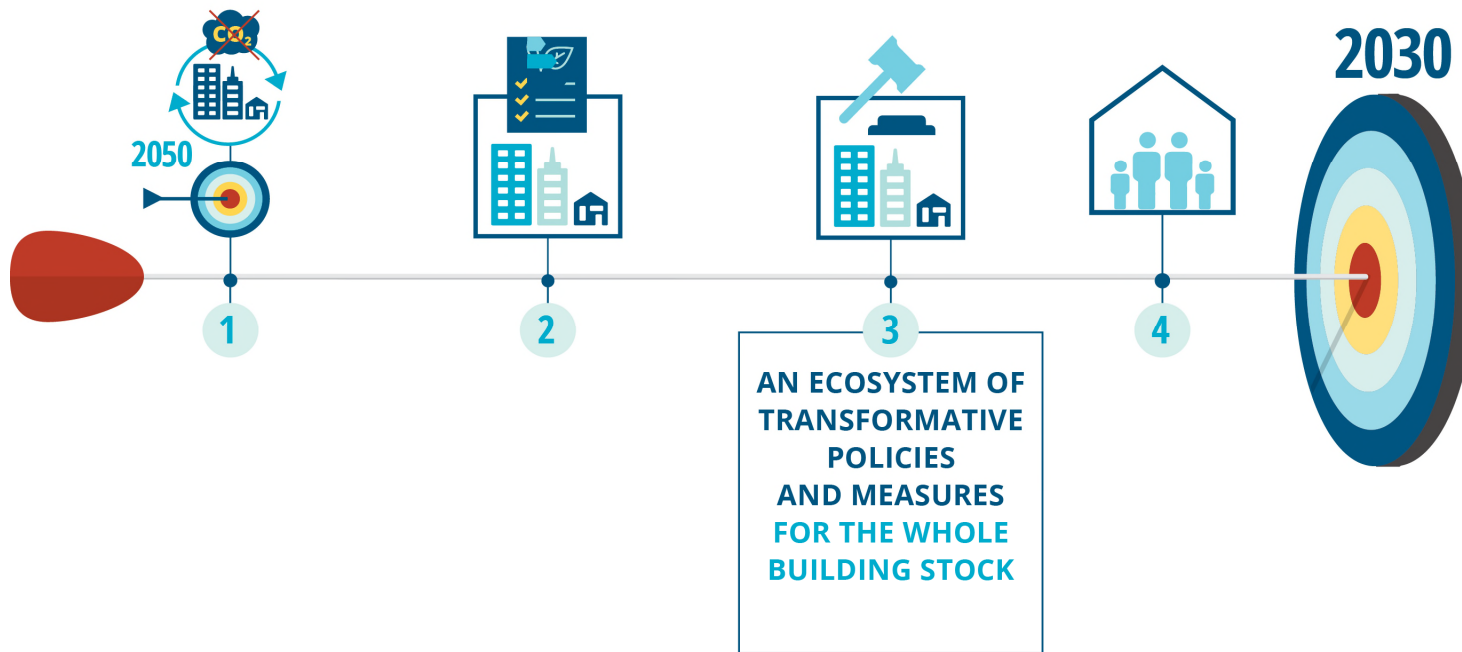
- Achieving a **very high energy performance** (Energy Efficiency First)
- A **full decarbonisation** at operational phase (supplied by RES only)
- **Low embodied carbon emissions** in construction materials

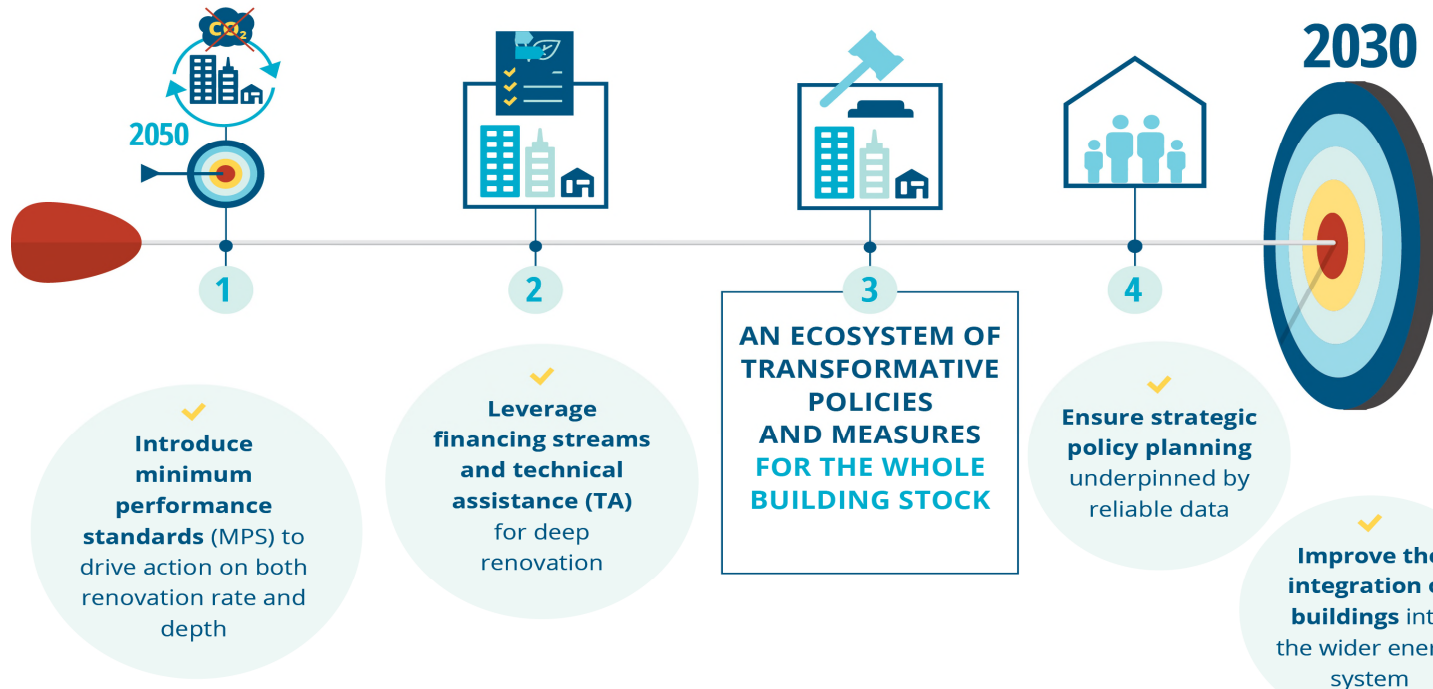


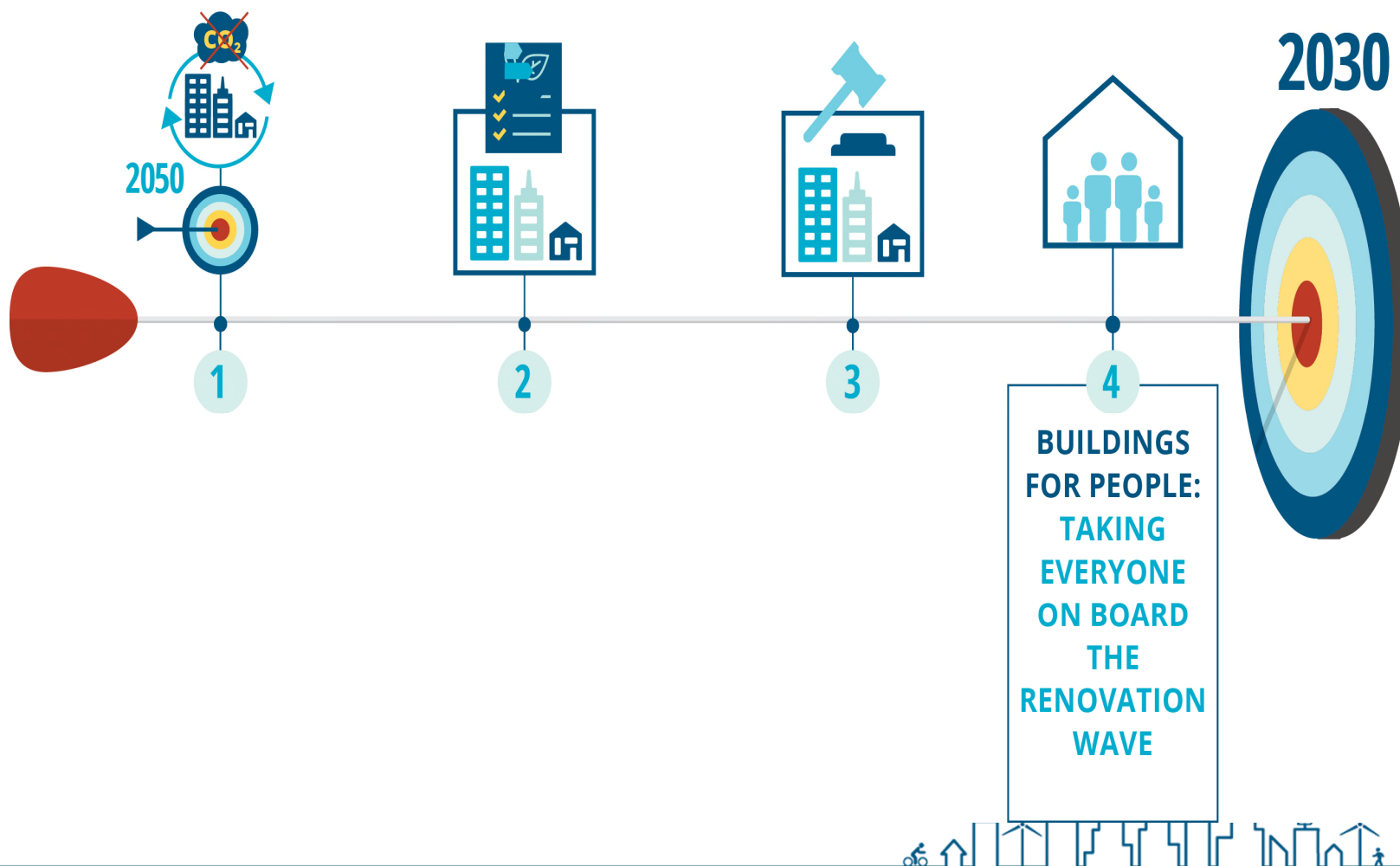


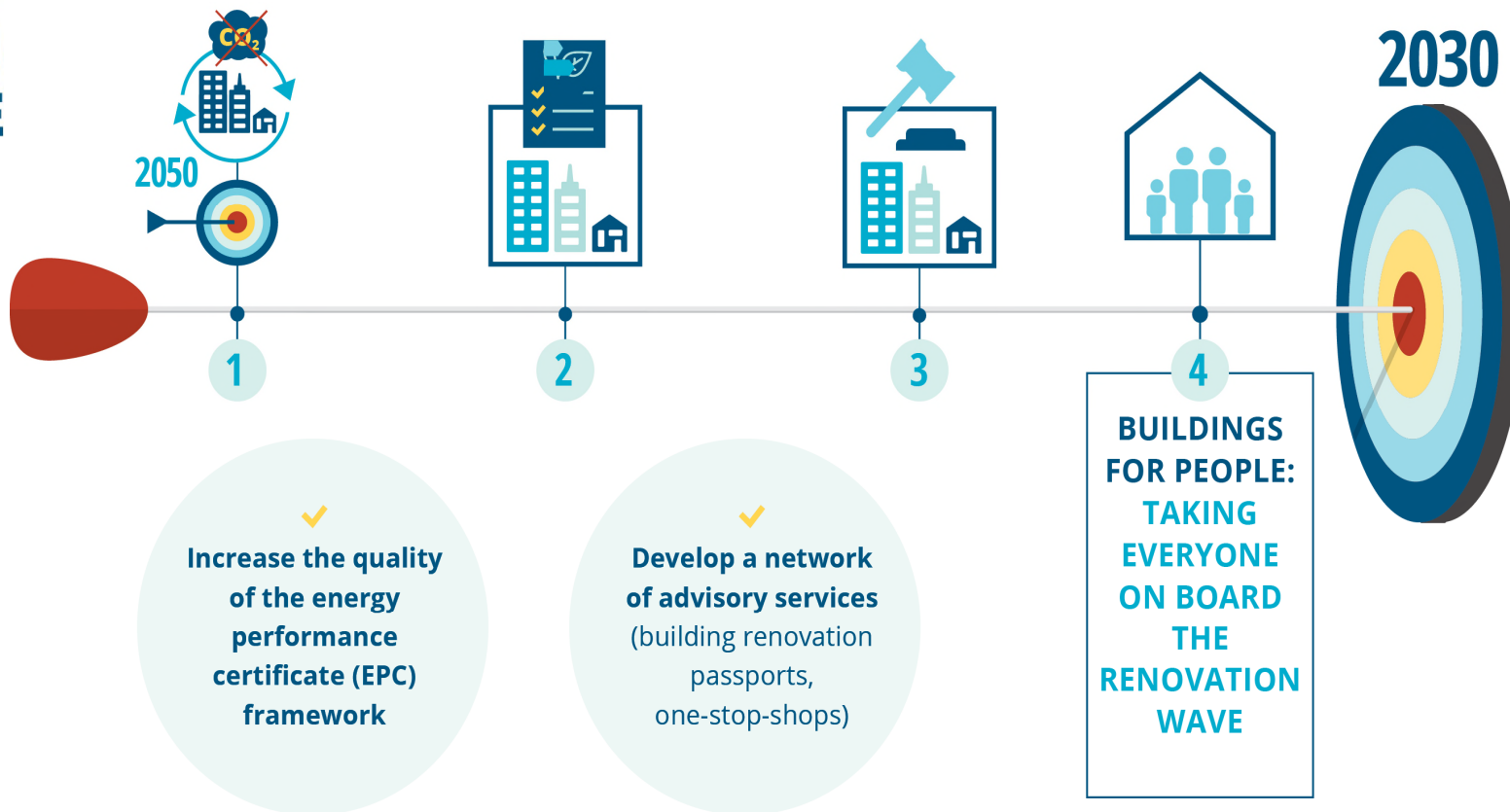












✓
Increase the quality
of the energy
performance
certificate (EPC)
framework

✓
Develop a network
of advisory services
(building renovation
passports,
one-stop-shops)

**BUILDINGS
FOR PEOPLE:
TAKING
EVERYONE
ON BOARD
THE
RENOVATION
WAVE**





CONCLUSION

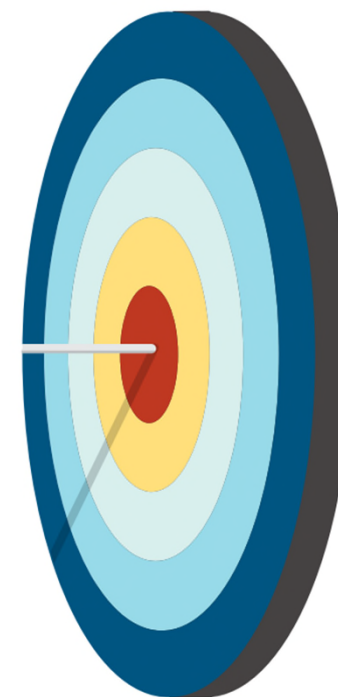
The revision of the EPBD must be undertaken in the light of both the urgency to address climate change and societal challenges.

Transforming the existing building stock and adjusting standards for new buildings is not a trivial task.

But our well proven (European) ingenuity and innovation will deliver solutions if the political will defines appropriate rules which are then thoroughly implemented.

The EU has the means to get its climate, buildings and social policies right, and the time is now.

2030





Hélène SIBILEAU

Senior Policy Advisor

helene.sibileau@bpie.eu

+32 497 27 35 47

www.bpie.eu

Follow us:

